

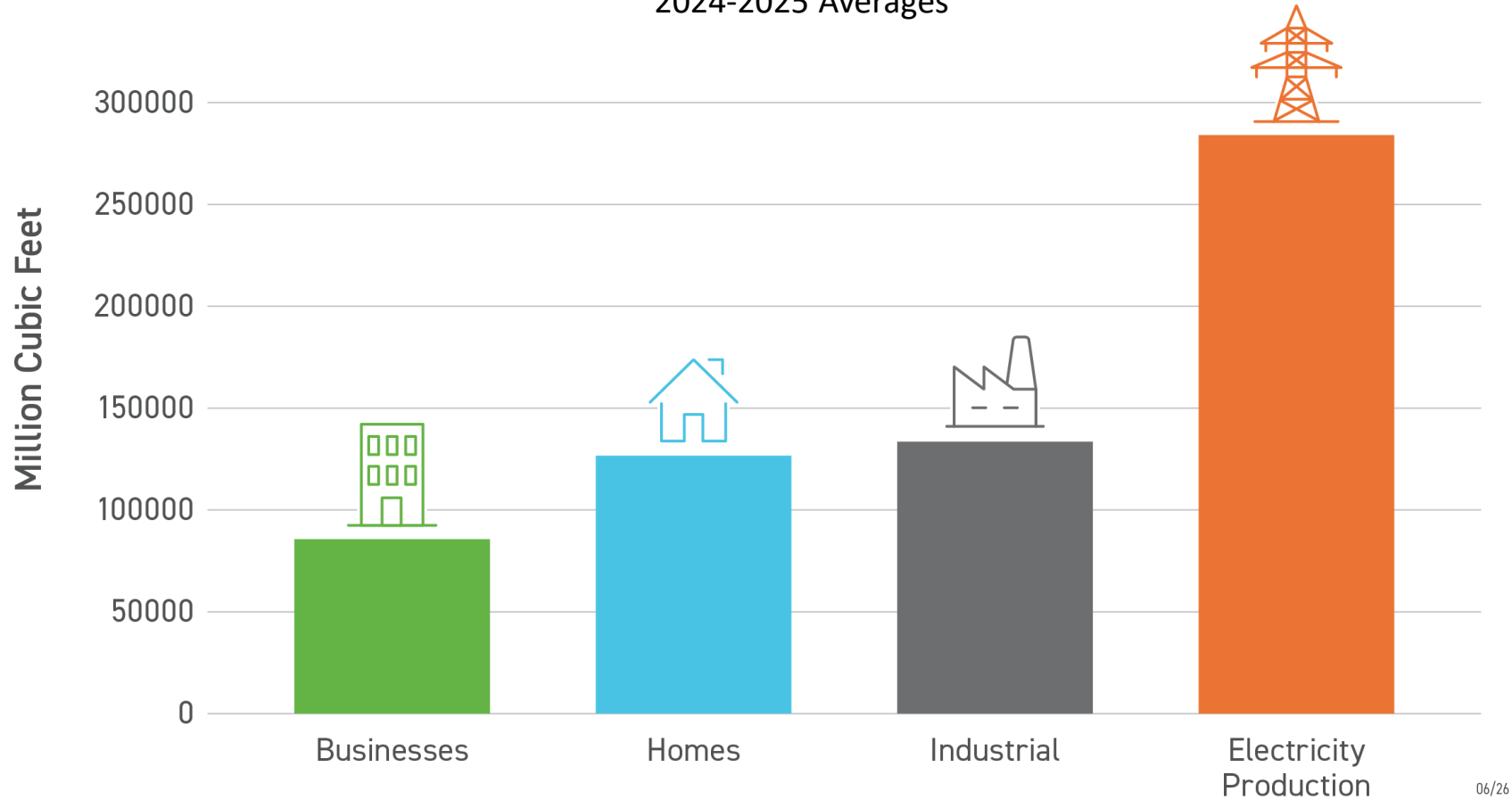
2026 Annual Energy Conference: Putting it all together



Natural Gas Use in the Pacific NW



Oregon and Washington Natural Gas Consumption
2024-2025 Averages

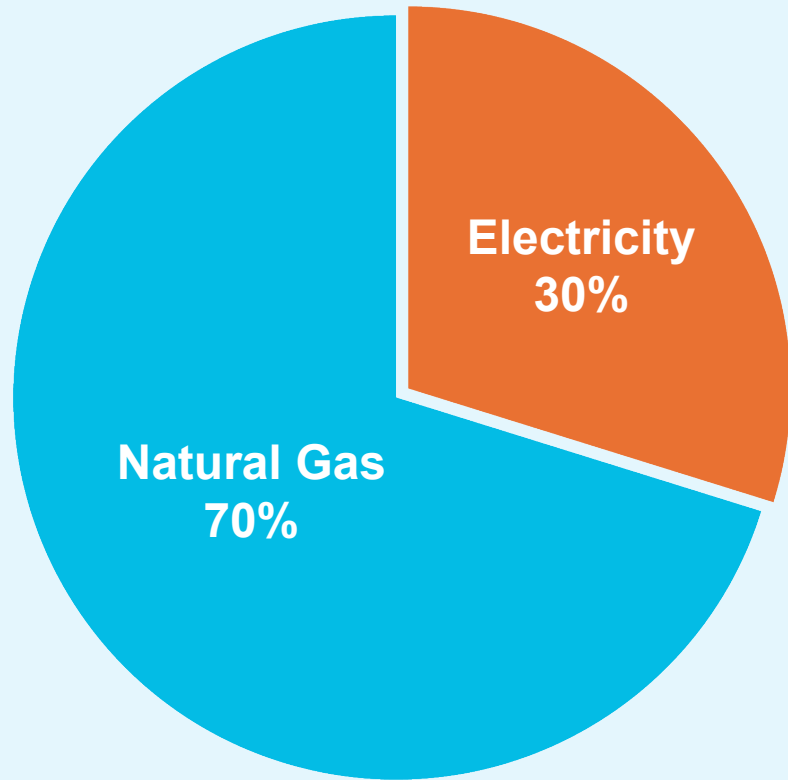


Source: U.S. Energy Information Administration; Oregon Natural Gas Consumption by End Use; Washington Natural Gas Consumption by End Use; combined averages for 2024-2025 (Washington industrial data not available for 2025). Data available at: https://www.eia.gov/dnav/ng/ng_cons_sum_dc_u_SOR_a.htm, https://www.eia.gov/dnav/ng/ng_cons_sum_dc_u_SWA_a.htm (Last accessed: 6/1/26)

Gas Distribution System's Role at Peak



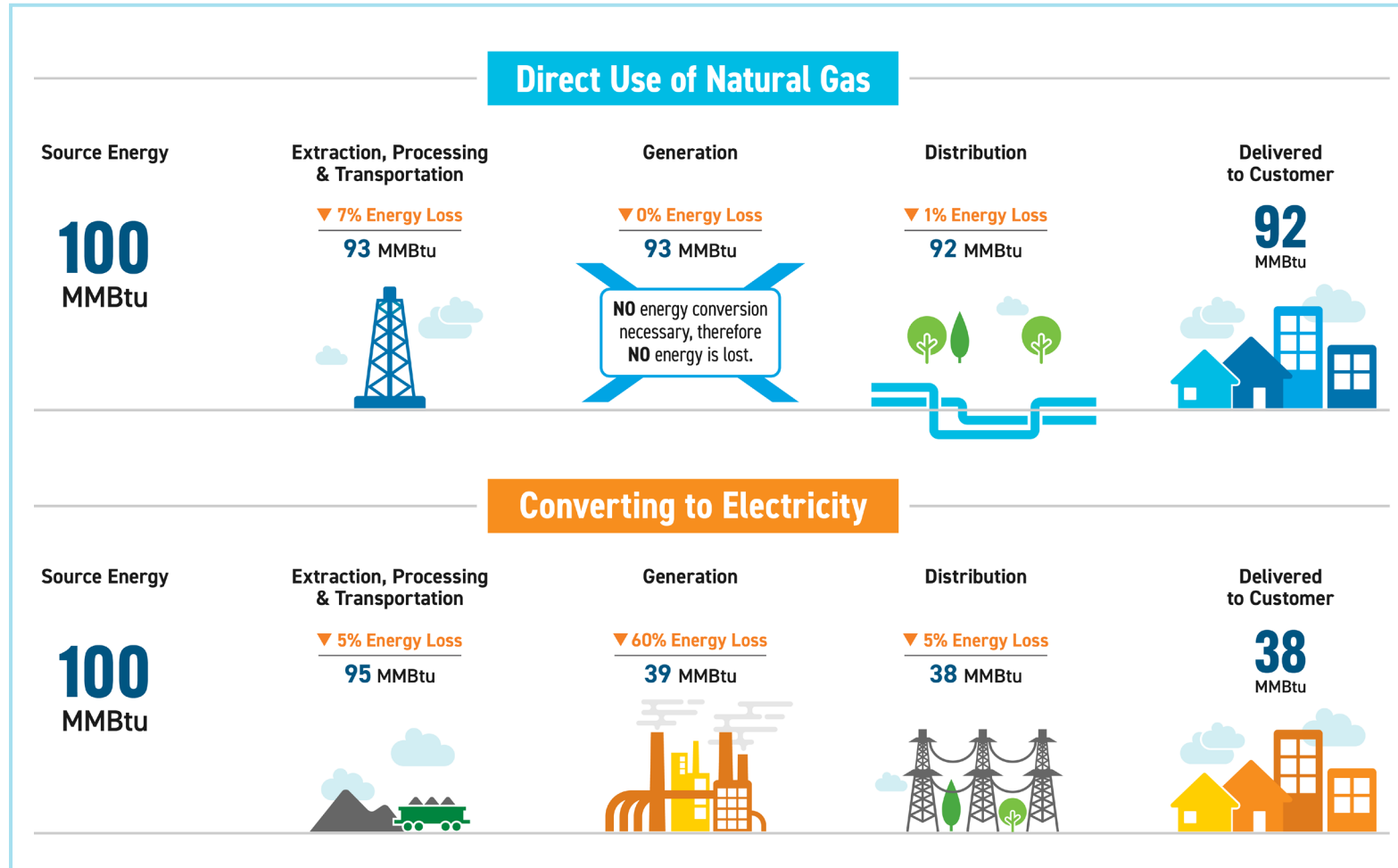
Oregon and Washington Combined



During peak conditions in the winter of 2024, the natural gas distribution system was meeting 70% of the Pacific NW energy needs.

- **Electric System:** 92,829 Dth (27,206 MW)
- **Gas Distribution System:** 218,546 Dth (64,050 MW)

Direct Use: Highly Efficient



The natural gas distribution system is **92% efficient** from production to customer.

Innovation

- Advanced gas and electric coordination
- Hybrid heating systems
- Renewable natural gas
- Carbon capture and storage
- Methane pyrolysis and hydrogen blending
- Thermal energy networks



How do we work together to remove barriers?

The Ask...



1st

Educate about the role of natural gas in a balanced energy future.

2nd

Cultivate partners to educate and advance efficient direct use.

3rd

Support the work of NWGA and engage with our advocacy.

Thank you!